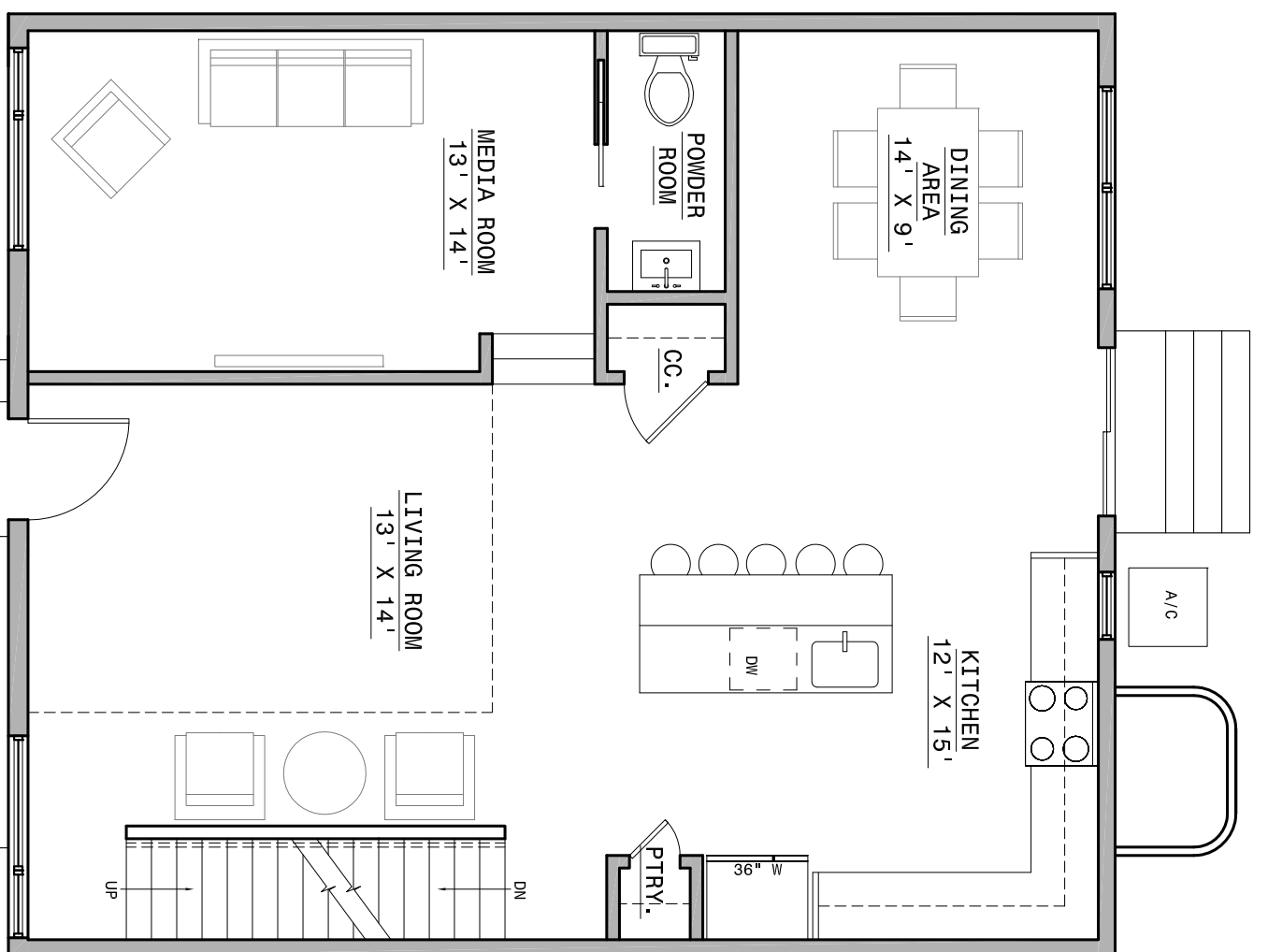
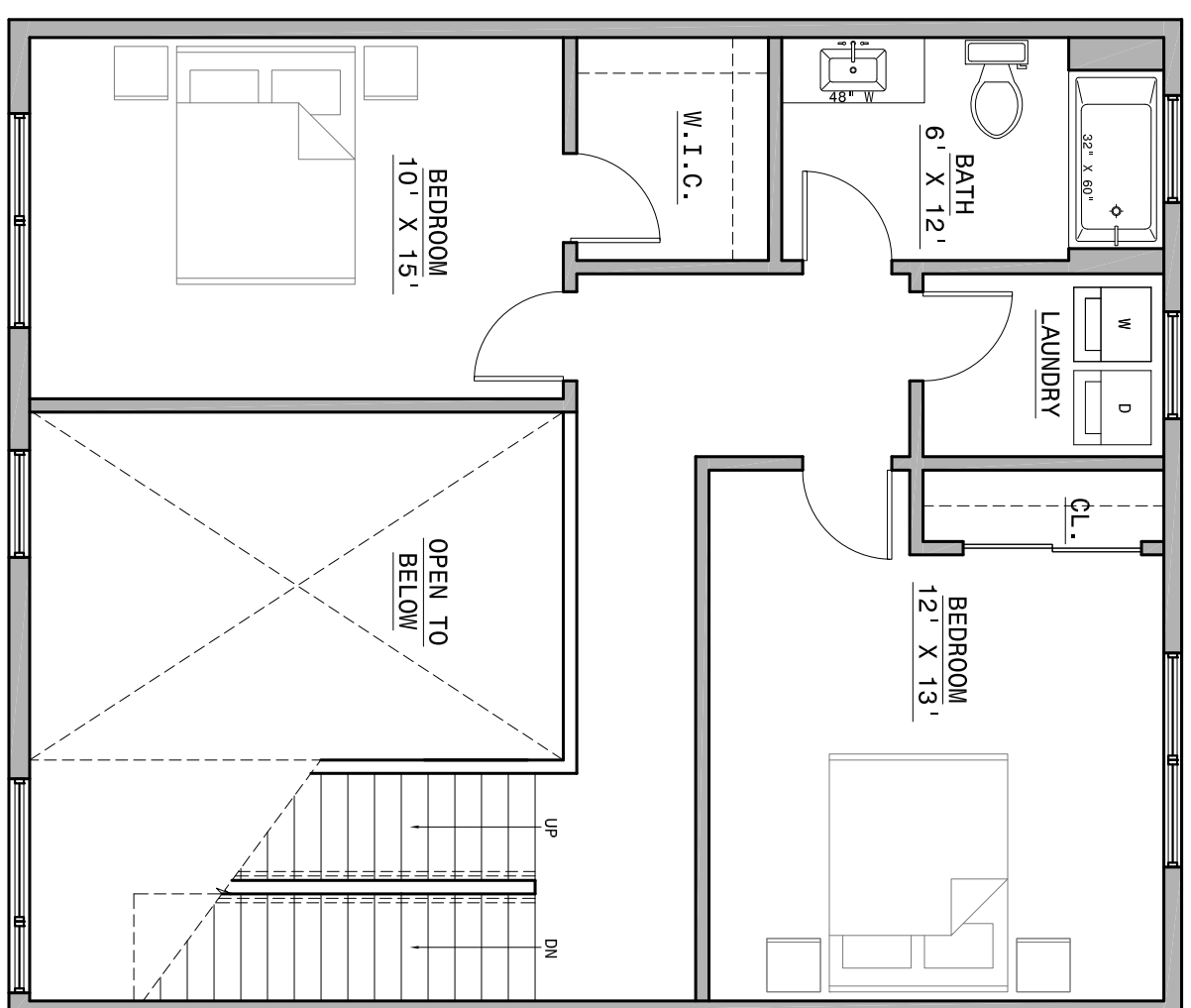


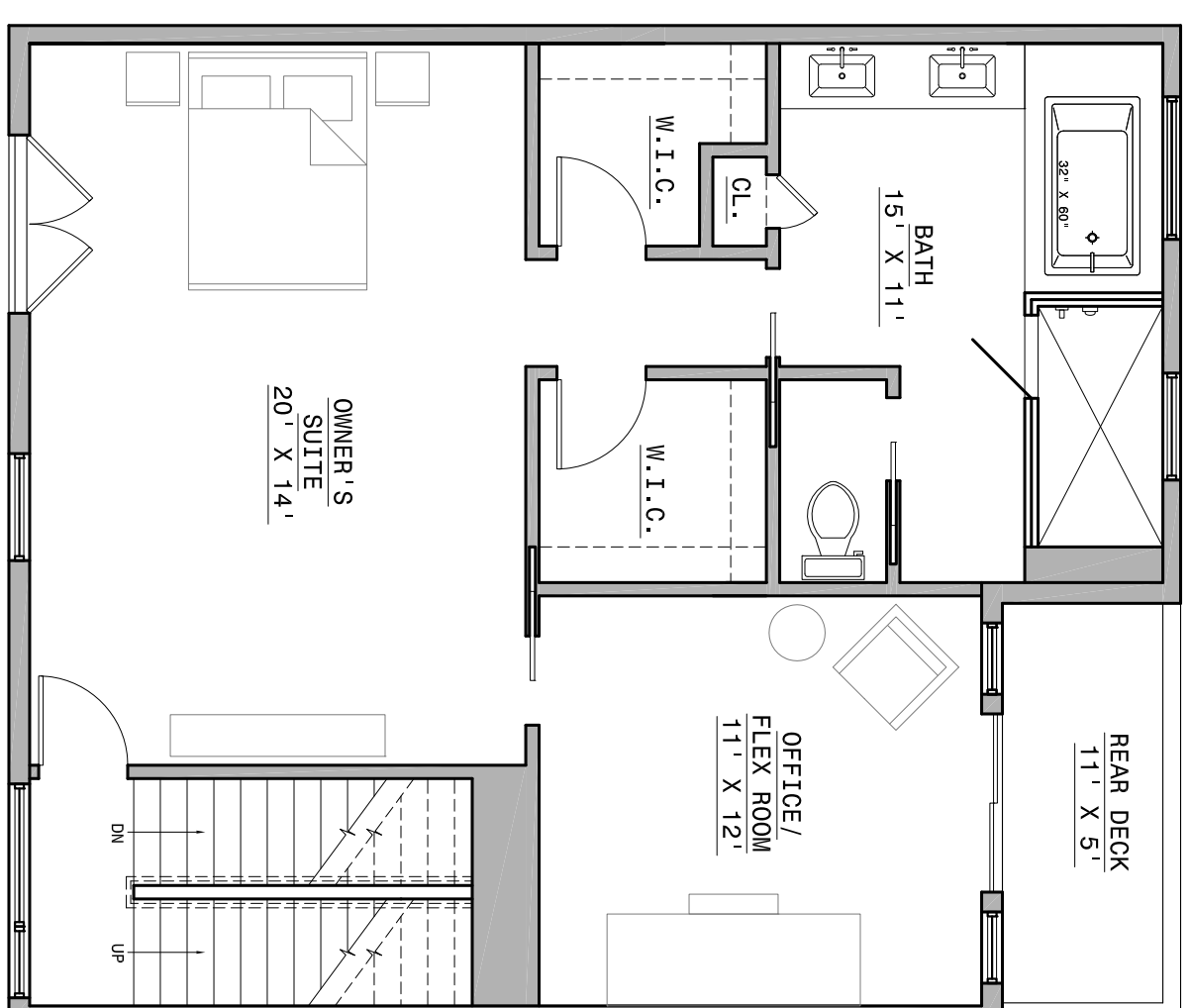
BASEMENT



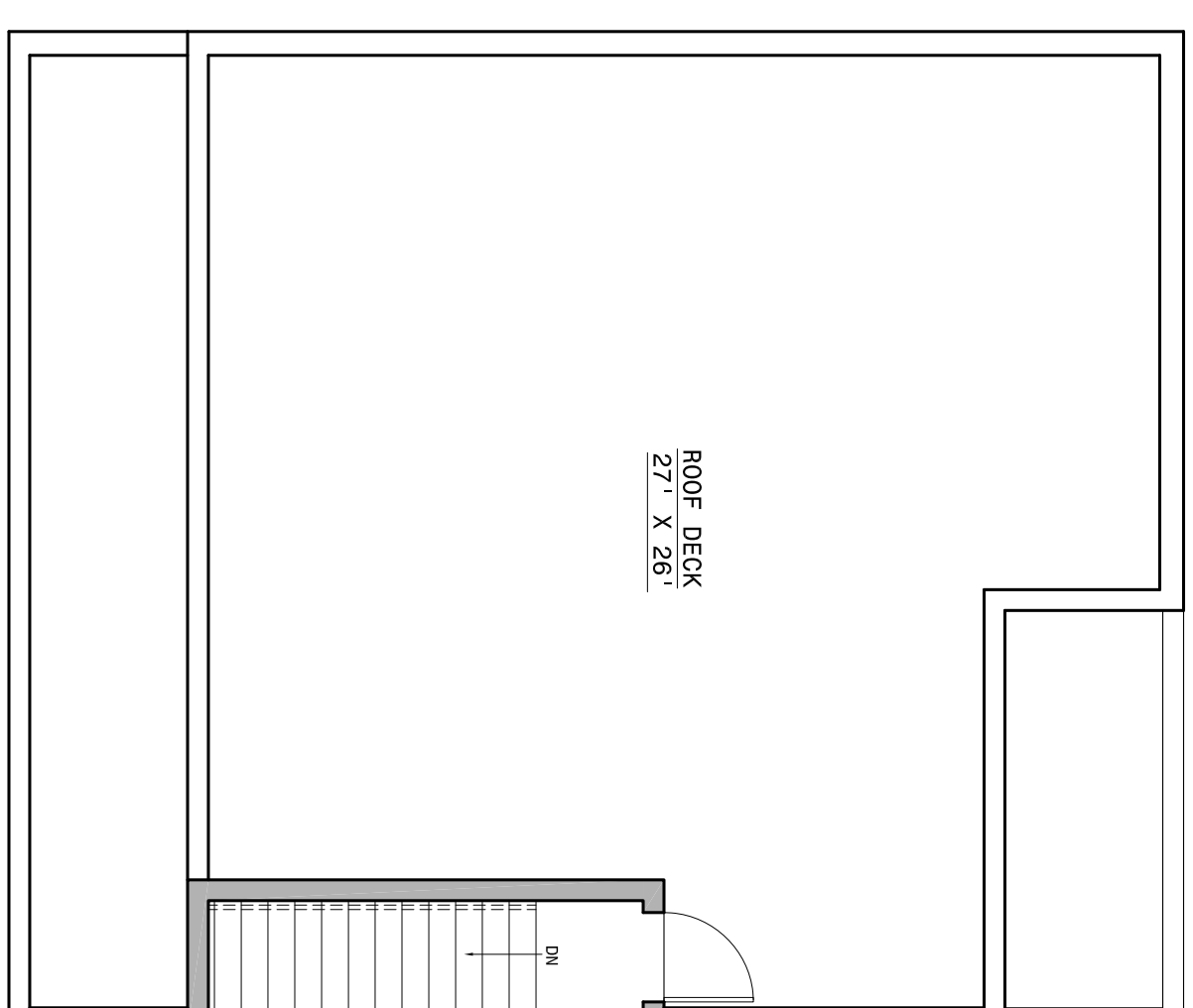
FIRST FLOOR



SECOND FLOOR

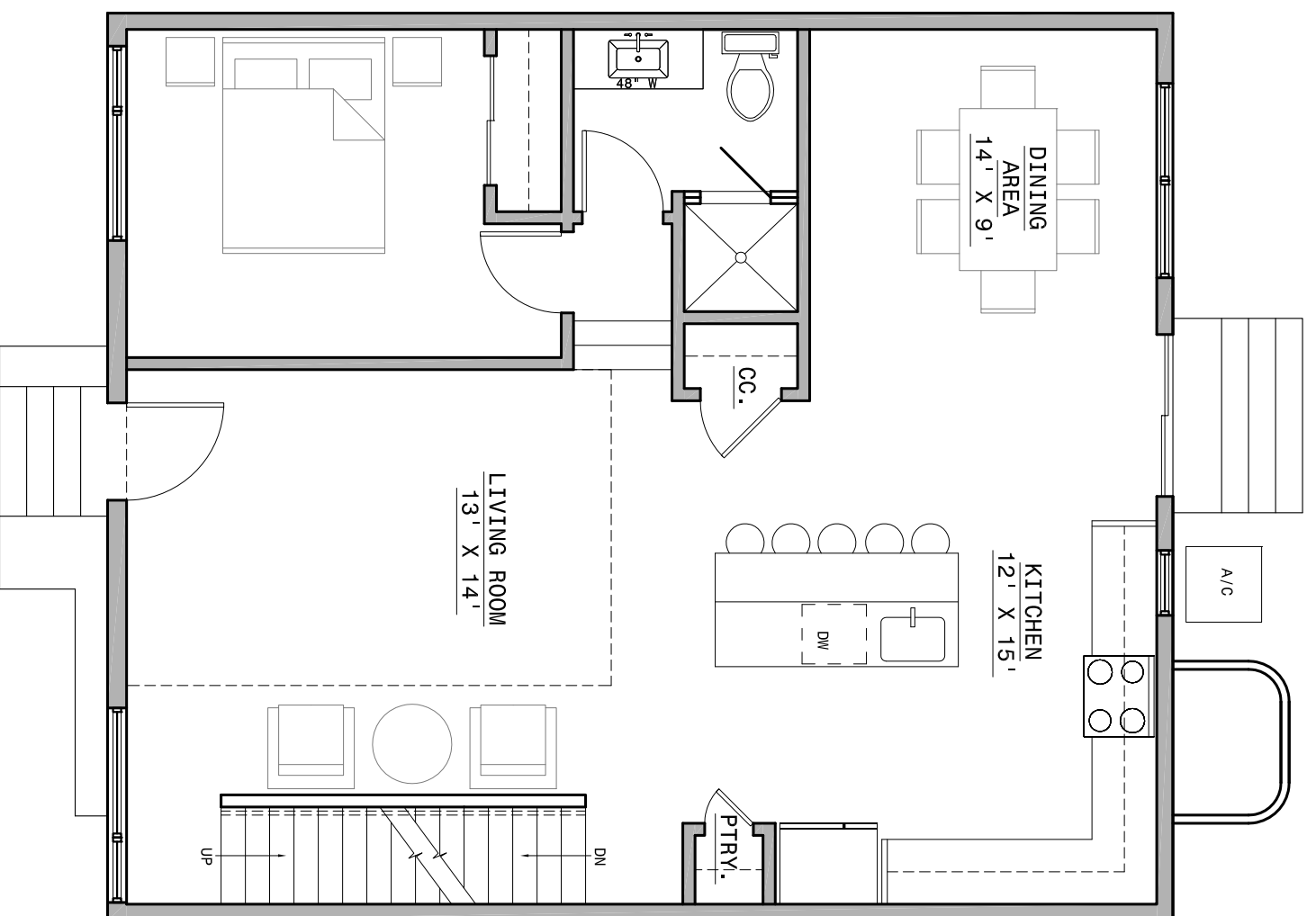


THIRD FLOOR



ROOF

OPTION A: FIRST FLOOR MEDIA ROOM



FIRST FLOOR

OPTION B: FIRST FLOOR IN-LAW SUITE

ONE SINGLE-FAMILY DWELLING
1030-32 EARL ST.
 PHILADELPHIA, PA 19125

1030-32 EARL ST.
 PHILA., PA 19125
 PROJECT CONTACT:
 BMK PROPERTIES LLC

ISSUED FOR:	DATE:
SCHEMATIC PLANNING	03.12.13
SCHEMATIC PLANNING	08.06.13
SCHEMATIC PLANNING	08.07.13

SCALE: 3/16" = 1' 0"

SCHEMATICS

SK-1

THIS DRAWING AND ITS ACCOMPANYING DOCUMENT (AND ANY INFORMATION CONTAINED THEREIN) ARE THE PROPERTY OF KJO ARCHITECTURE, LLC AND ARE NOT TO BE REPRODUCED, COPIED, OR TRANSMITTED IN ANY FORM OR BY ANY MEANS, ELECTRONIC OR MECHANICAL, INCLUDING PHOTOCOPYING, RECORDING, OR BY ANY INFORMATION STORAGE AND RETRIEVAL SYSTEM. ANY REPRODUCTION OR TRANSMISSION OF THIS DRAWING WITHOUT THE WRITTEN PERMISSION OF KJO ARCHITECTURE, LLC IS STRICTLY PROHIBITED. THE USER OF THIS DRAWING AGREES TO HOLD KJO ARCHITECTURE, LLC HARMLESS FROM AND AGAINST ALL LIABILITY, INCLUDING REASONABLE ATTORNEY'S FEES, FOR ANY AND ALL DAMAGES, LOSSES, AND EXPENSES, INCLUDING REASONABLE ATTORNEY'S FEES, THAT MAY BE INCURRED BY THE USER OF THIS DRAWING. THE USER OF THIS DRAWING AGREES TO HOLD KJO ARCHITECTURE, LLC HARMLESS FROM AND AGAINST ALL LIABILITY, INCLUDING REASONABLE ATTORNEY'S FEES, FOR ANY AND ALL DAMAGES, LOSSES, AND EXPENSES, INCLUDING REASONABLE ATTORNEY'S FEES, THAT MAY BE INCURRED BY THE USER OF THIS DRAWING. THE USER OF THIS DRAWING AGREES TO HOLD KJO ARCHITECTURE, LLC HARMLESS FROM AND AGAINST ALL LIABILITY, INCLUDING REASONABLE ATTORNEY'S FEES, FOR ANY AND ALL DAMAGES, LOSSES, AND EXPENSES, INCLUDING REASONABLE ATTORNEY'S FEES, THAT MAY BE INCURRED BY THE USER OF THIS DRAWING.