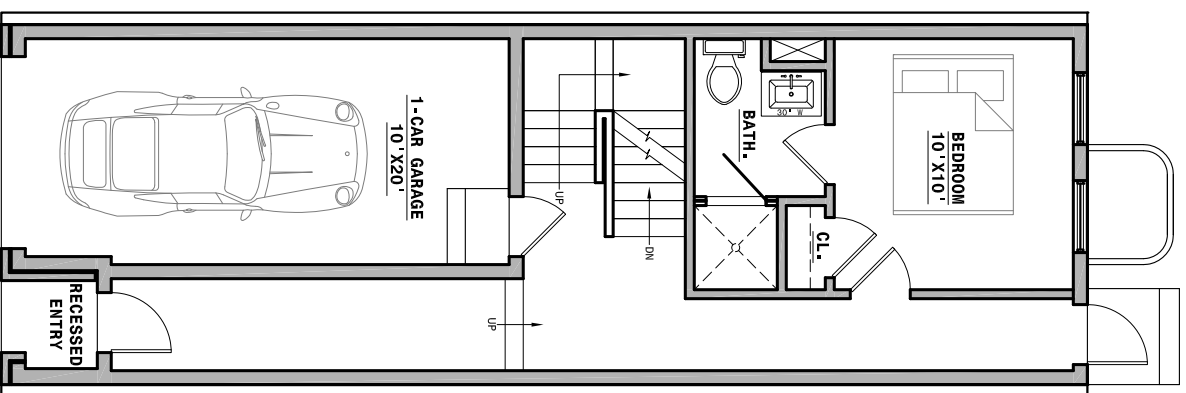
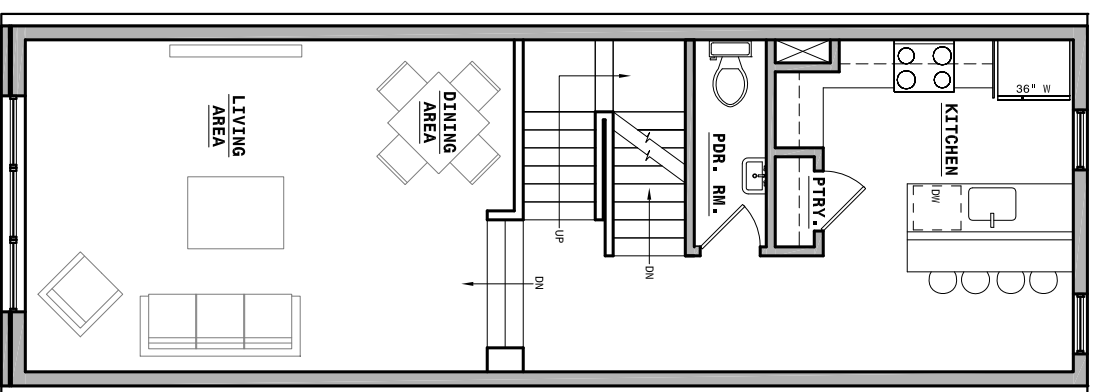


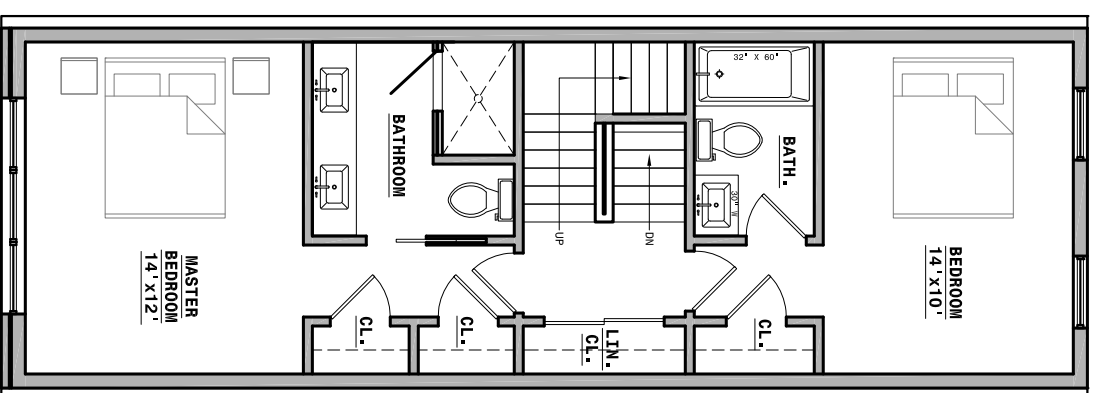
BASEMENT



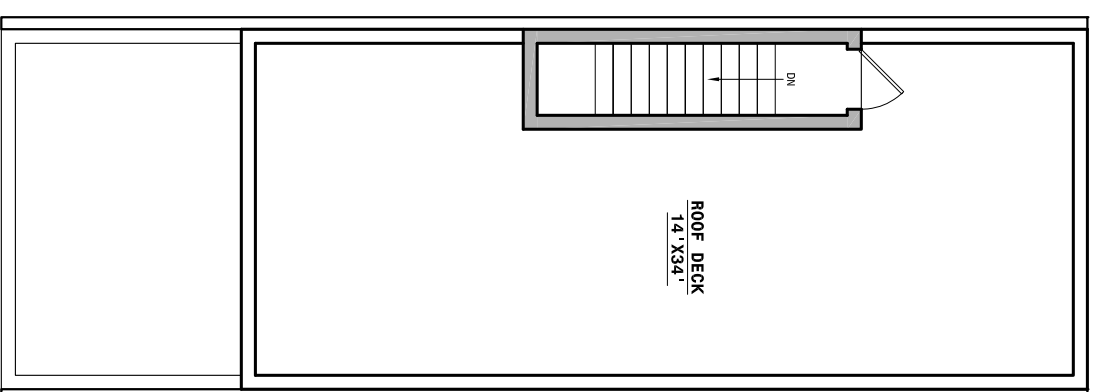
FIRST FLOOR



SECOND FLOOR



THIRD FLOOR



ROOF

GORDON ST. UNIT :	3 BEDS, 3.5 BATHS
ZONING CLASSIFICATION:	RSA-5
TOTAL LOT AREA:	1036 SF
PROPOSED BLDG. COVER. :	723.94 SF
PROPOSED OPEN AREA:	312.06 SF
PROPOSED TOTAL SF:	1809 SF
<small>(SF EXCLUDES BASEMENT, GARAGE)</small>	
STREET PROJECTIONS:	CONCRETE STEPS

ARCHITECTURAL PLANS
SCALE: 1/8" = 1'
ISSUED FOR: SCHEM. REVIEW
DATE: 06.04.13
DRAWING NO.

Z-2



KJO ARCHITECTURE, LLC
 2424 E. YORK ST. S112
 PHILADELPHIA, PA 19125
 P: 215.292.1355 F: 215.359.0603
 WWW.KJOARCHITECTURE.COM

©2012 KJO ARCHITECTURE, LLC.

2312 E. YORK ST. - GORDON ST. UNIT

PHILADELPHIA, PA 19125 (1) S.F.D.: 3 BEDS, 3.5 BATHS