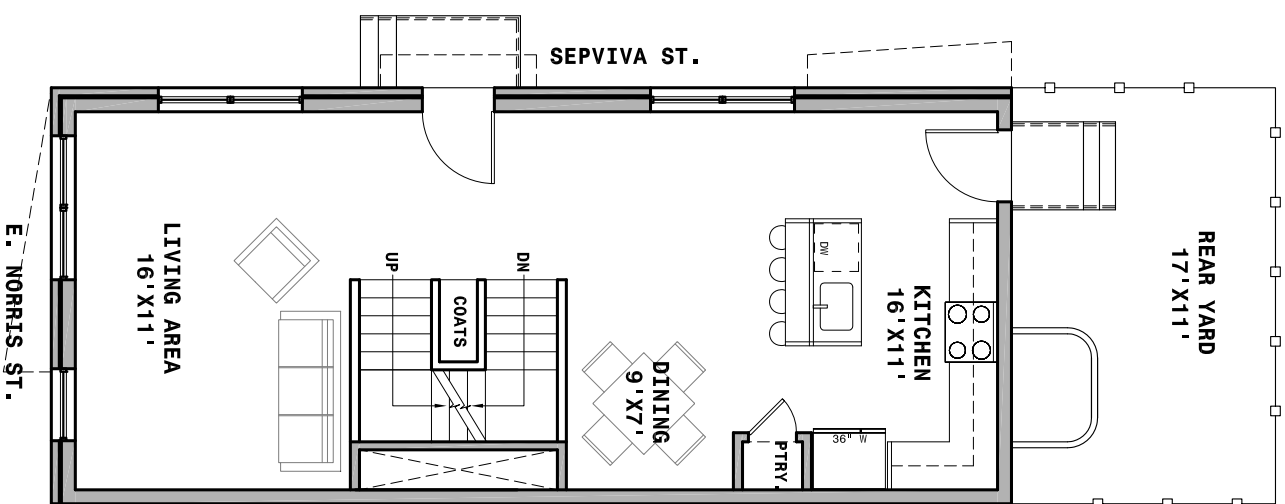
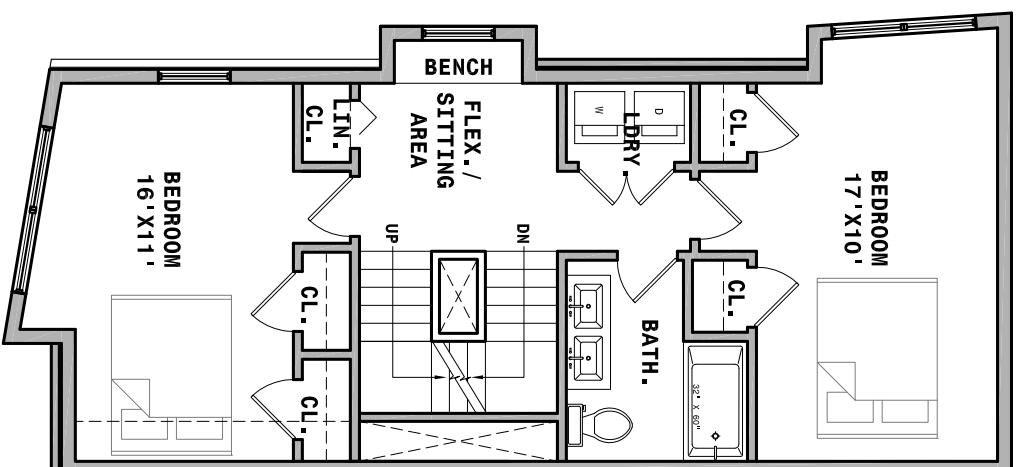


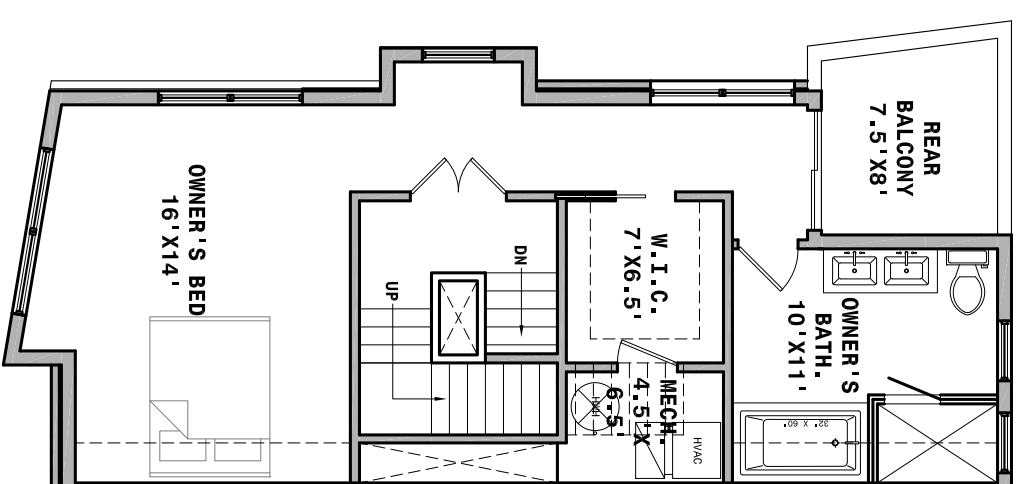
BASEMENT



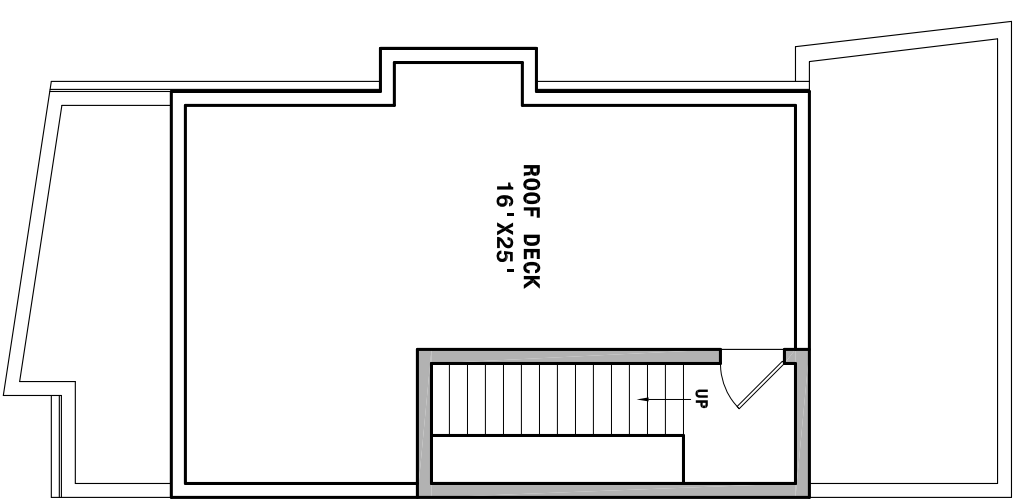
FIRST FLOOR



SECOND FLOOR



THIRD FLOOR



ROOF LEVEL



KJO ARCHITECTURE, LLC  
 2424 E. YORK ST. S112  
 PHILADELPHIA, PA 19125  
 P: 215.292.1355 F: 215.359.0603  
 WWW.KJOARCHITECTURE.COM

©2012 KJO ARCHITECTURE, LLC.

ZONING DATA	
ZONING CLASSIFICATION:	RSA-5
TOTAL LOT AREA:	900 SF
PROPOSED BLDG. COVER.:	693.33 SF
PROPOSED OPEN AREA:	190.67 SF
PROPOSED TOTAL SF:	2085 SF
(SF EXCLUDES BASEMENT)	
STREET PROJECTIONS:	
(1) BAY, CONCRETE STEPS	

ARCHITECTURAL PLANS	
SCALE:	1/8"=1'-0"
ISSUED FOR:	SCHEM. REV.
DATE:	08.14.13
DRAWING NO.	SK-1

2201 E. NORRIS ST. PHILADELPHIA, PA 19125 (1) S.F.D.: 3 BEDS, 2.5 BATHS