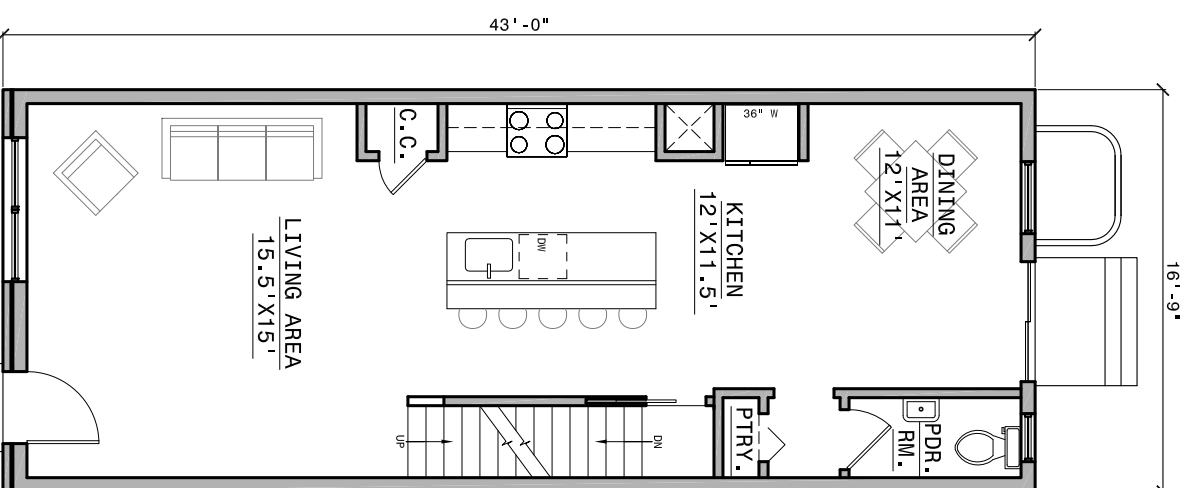
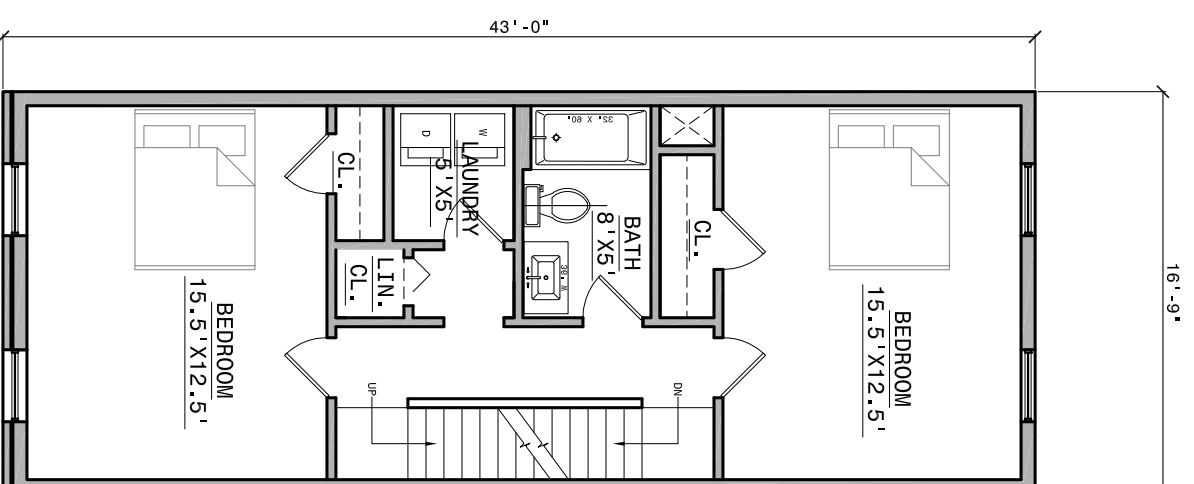


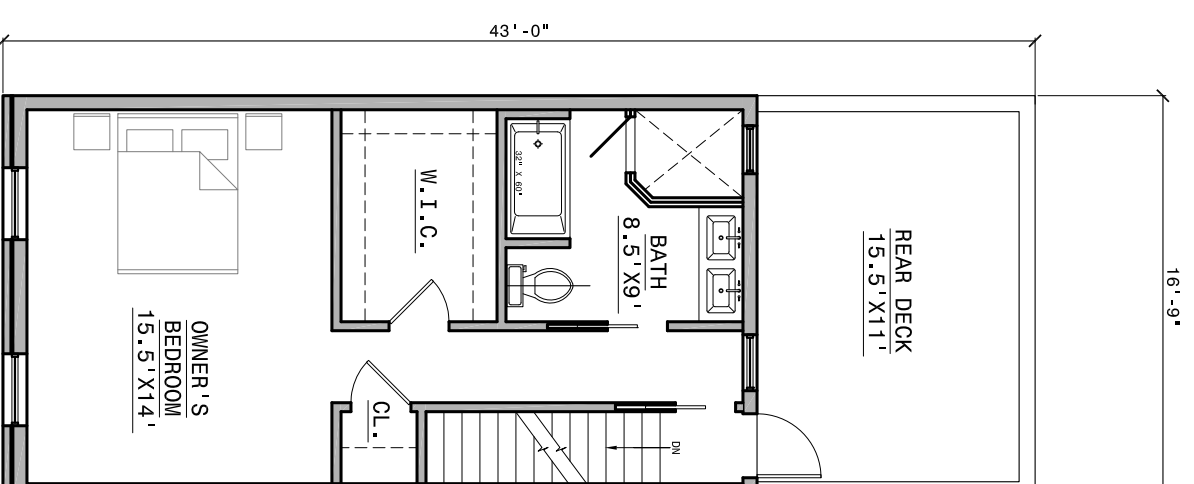
BASEMENT



FIRST FLOOR



SECOND FLOOR



THIRD FLOOR



KJO ARCHITECTURE, LLC
 2424 E. YORK ST. S112
 PHILADELPHIA, PA 19125
 P: 215.292.1355 F: 215.359.0603
 WWW.KJOARCHITECTURE.COM

©2012 KJO ARCHITECTURE, LLC.

ZONING DATA:	RSA-5
ZONING CLASSIFICATION:	VARIABLES (SEE SITE PLAN)
TOTAL LOT AREA:	720.75 SF
PROPOSED BLDG. COVER.:	VARIES (SEE SITE PLAN)
PROPOSED OPEN AREA:	1967 SF
PROPOSED TOTAL SF:	(SF EXCLUDES BASEMENT)
STREET PROJECTIONS:	CONCRETE STEPS

ZONING DATA:	RSA-5
ZONING CLASSIFICATION:	VARIABLES (SEE SITE PLAN)
TOTAL LOT AREA:	720.75 SF
PROPOSED BLDG. COVER.:	VARIES (SEE SITE PLAN)
PROPOSED OPEN AREA:	1967 SF
PROPOSED TOTAL SF:	(SF EXCLUDES BASEMENT)
STREET PROJECTIONS:	CONCRETE STEPS

ARCHITECTURAL PLANS
SCALE: 1/8"=1'-0"
ISSUED FOR: SCHEMATICS
DATE: 07.15.13
DRAWING NO. SK-1

2023-31 E. ARIZONA ST.

PHILADELPHIA, PA 19125 (4) S.F.D.: 3 BEDS, 2.5 BATHS