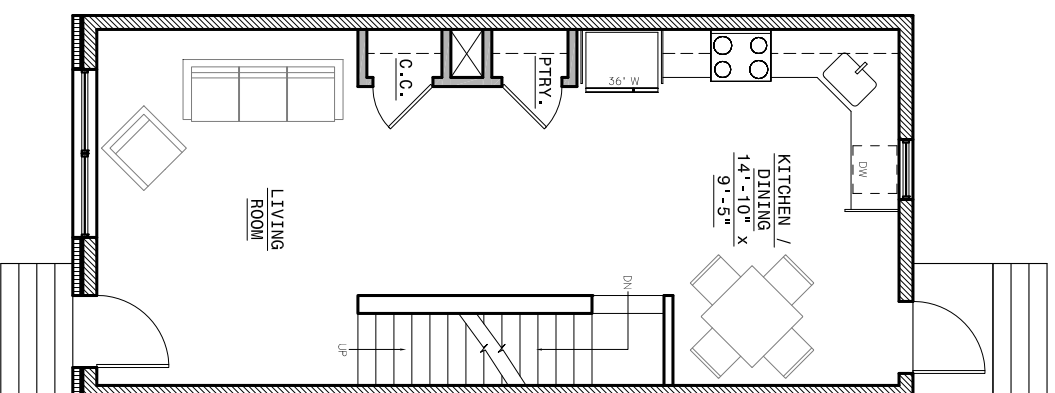
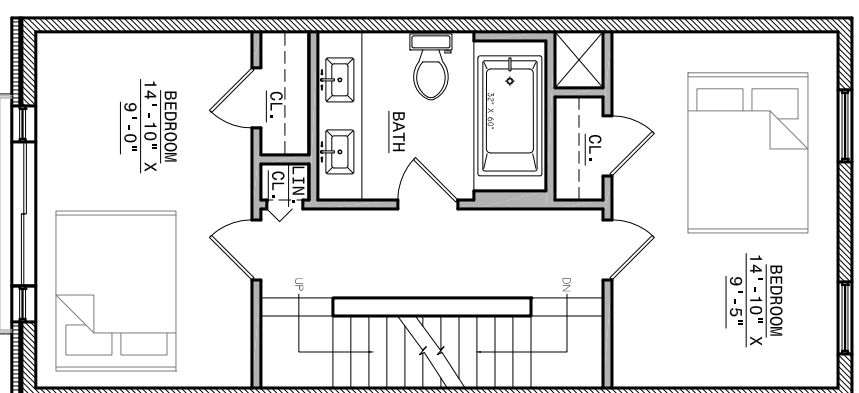


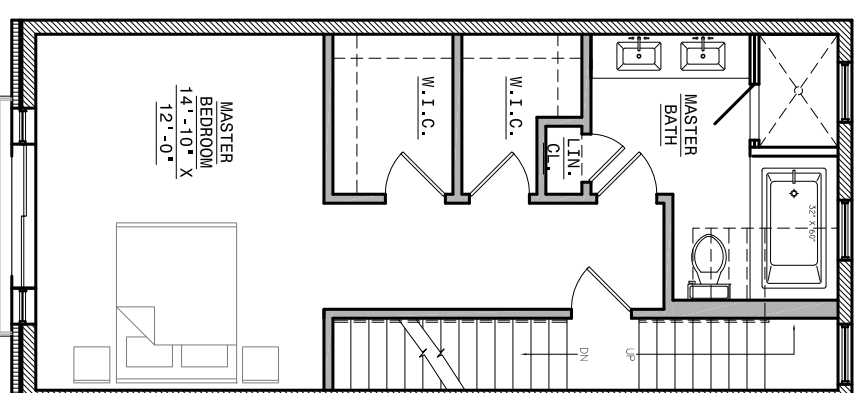
BASEMENT



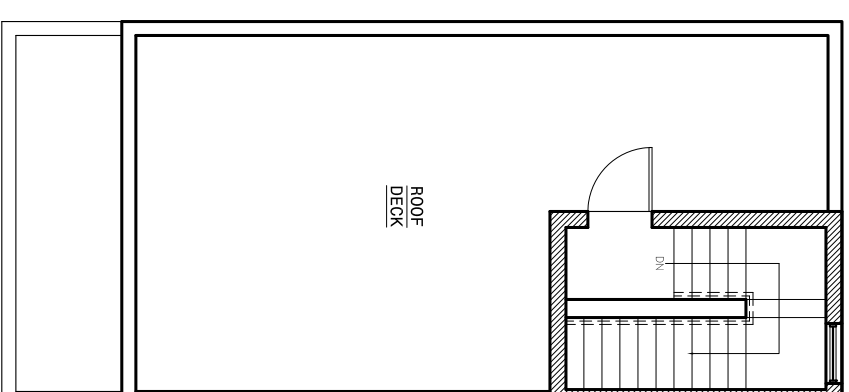
FIRST FLOOR



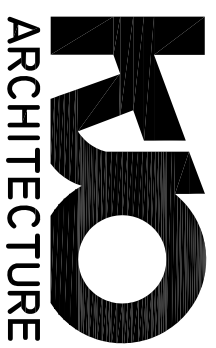
SECOND FLOOR



THIRD FLOOR



ROOF DECK



KJO ARCHITECTURE, LLC  
 2424 E. YORK ST. S112  
 PHILADELPHIA, PA 19125  
 P: 215.292.1355 F: 215.359.0603  
 WWW.KJOARCHITECTURE.COM

©2012 KJO ARCHITECTURE, LLC.

<b>1415-19 N 4TH ST.</b>	
ZONING CLASSIFICATION:	RSA-5
TOTAL LOT AREA:	800 SF
PROPOSED BLDG. COVER.:	560 SF
PROPOSED OPEN AREA:	240 SF
PROPOSED TOTAL SF:	1680 SF (SF EXCLUDES BASEMENT)
STREET PROJECTIONS: CONCRETE STEPS	

<b>ARCHITECTURAL PLANS</b>	
SCALE:	1/8" = 1'
ISSUED FOR:	SCHEM. REVIEW
DATE:	10.16.12
DRAWING NO.	<b>S-1</b>

**1415-19 N. 4TH ST.**

PHILADELPHIA, PA 19123 (3) S.F.D.: 3 BEDS, 2.5 BATHS